

## Flameproof Junction Boxes EJG Series

Wet Locations  
Raintight  
NEMA 4,7,9



<EJG 20>



<EJG 30>



<Self Standing>

### ❖ Type of Explosion-proof Flameproof (Ex d IIC T6)

#### ❖ Application

- EJG series Junction boxes are used ;
- in threaded rigid conduit system in hazardous areas
  - to function as a splice box, pull box or equipment and device enclosure
  - in Indoors and outdoors

#### ❖ Standard Finish

- Zinc chromated
- MUNSELL No. 7.5BG 6/1.5

#### ❖ Features

- Threaded construction throughout permits use in hazardous areas
- Wide variety of conduit hub arrangements
- Hubs provide integral bushings
- Covers are sealed with optional "O"ring gasket when watertight enclosures are required
- Internal grounding lug provides a means to ground enclosed equipment

#### ❖ Standard Materials

- Body : Cast aluminium alloy
- Cover : Cast aluminium alloy

#### ❖ Compliance & Certification

- IEC 60079-0, 1
- UL Listed File No.
- Certified by UL (Underwriters Laboratories Inc.), KOSHA (Korea Occupational Safety & Health Agency), KGS (Korea Gas Safety Corporation), and the others.

## Threaded Covers for EJG Junction Boxes



Flat Cover



Glass Cover



Dome Covers

#### ❖ Application

- EJG threaded covers are used ;
- with EJG boxes in control systems in hazardous areas
  - Indoors and outdoors
  - In three categories :
    - +Flat – for normal use : furnished with standard EJG boxes
    - +Glass window – to provide visibility of meter indications when used to enclose meters
    - +Domed – for increasing volume of EJG to make it easier to splice and pull large conductors

#### ❖ Features

- Domed – more suitable for use when splices of heavy conductors are made and enclosed, since the conductors may be pulled in with the ends outside the box. After the splices are made, they do not have to be crowded back into the box
- Glass window has maximum diameter glass to give best visibility. In selecting, the diameter of the meter face should match or be slightly smaller than window diameter

#### ❖ Standard Materials

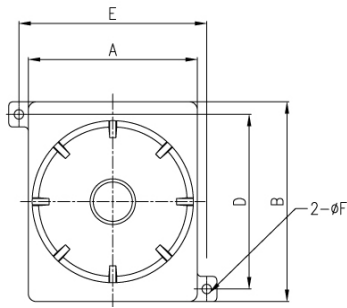
- Cast aluminium alloy

#### ❖ Standard Finish

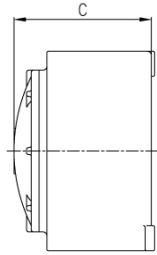
- MUNSELL No. 7.5BG 6/1.5
- If you want another color, contact us please.

⇒ Flat cover is standard. Suffix GC for Glass Cover, and DC for Dome Cover. ex) EJG 21 DC

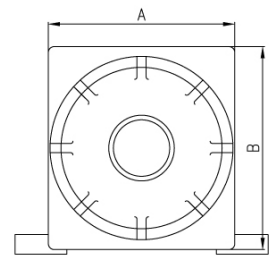
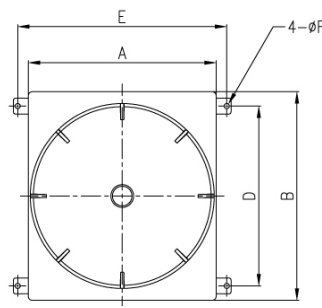
## ❖ Body Dimension



EJG 20



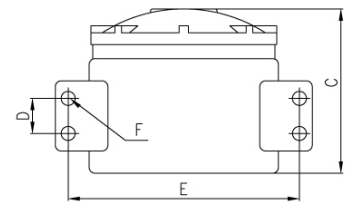
EJG 30



Self Standing Type

CATALOG NO.		DIMENSIONS (mm)					
		A	B	C	D	E	F
EJG 10 Series	EJG 11	118	118	118	—	—	—
	EJG 12	130	130	87	—	—	—
	EJG 13	145	145	131	113	170	10
EJG 20 Series	EJG 20	157	157	130	113	180	10
	EJG 21	165	178	140	146	190	10
	EJG 22	203	254	150	222	228	10
	EJG 23	216	254	180	222	240	10
	* EJG 23S	216	254	180	63	245	10
EJG 30 Series	EJG 31	280	305	240	260	308	12
	* EJG 31S	280	305	240	89	308	12
	EJG 32	357	459	343	407	386	12
	EJG 33	480	530	430	457	534	13

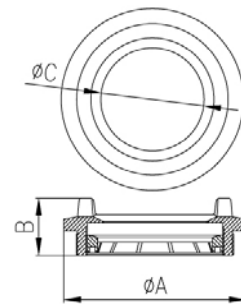
※ EJG 23S, 31S are Self Standing Type.



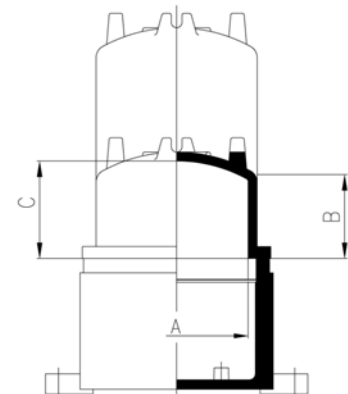
## ❖ Cover Dimension

Cover For Body	EJG DC Dim.(mm)			EJG GC Dim.(mm)		
	A	B	C	A	B	C
EJG 21	120	70	102	159	50	90
EJG 21*	120	232	264			
EJG 22	166	130	172	209	55	120
EJG 23 / 23S	166	130	172	209	55	120
EJG 31	228	203	266	280	50	172
EJG 31S	228	388	442			
EJG 32	300	90	166	—	—	—
EJG 33	300	370	446	—	—	—

\* Suffix DCL when order large size dome cover in EJG 21 body.



EJG GC  
(Glass Cover)



EJG DC  
(Dome Cover)