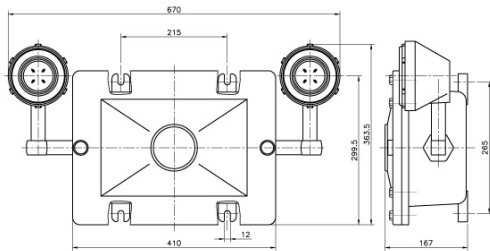


Emergency Lighting Fixture EXEL Series

❖ Type of Explosion-proof Flameproof (Ex d IIB T4)



❖ Dimensions(mm)



❖ Application

EXEL emergency lighting fittings are used:

- to provide safe, reliable illumination indoors or outdoors to designated areas during failure or interruption of power to the normal lighting system.
- in areas made hazardous by the presence of flammable gases and vapors, combustible dusts or easily ignitable fibers and flyings.
- in areas where corrosion vibration, moisture, dirt, and rough usage may be encountered.
- in refineries, chemical and petrochemical facilities, manufacturing plants, waste water treatment facilities, and other areas where safe, reliable, hazardous area emergency lighting is needed.

❖ Standard Materials

- Power supply enclosure and fixture assembly—cast aluminium alloy

❖ Features

- Compact factory sealed fixture assemblies are each furnished with a 12 watt tungstenhalogen lamp and inner reflector for appropriate photometrics in hazardous areas.
- Fixture assemblies are fully adjustable and lockable on two axes to provide flexible and consistent light aiming capabilities.
- Fixture lens ring is threaded for easy relamping and locks in place with hex head set screw; will not loosen due to vibration.
- Ground joint cover with external flange design permits large opening and easy access to internal components. stud bolts in diagonally opposite corners of body ease cover removal and installation.
- Two 1" conduit openings, with plugs, are standard, for choice of top or bottom feed.
- Factory-installed PUSH-TO-TEST pushbutton enables easy testing of system.
- MAIN POWER ON pilot light indicates AC power is being supplied to the battery charger; pilot light jewel is threaded for easy lamp replacement.
- Stainless steel drain minimizes moisture collection. Brass breather with cap provides ventilation, minimizes moisture collection.
- Rugged, long-life, maintenance-free, nickel cadmium battery provides 30 watts of power for the required 1-1/2" hours.
- Solid state battery charger for long life and reliable service prevents deep discharge by automatically disconnecting fixtures from battery.
- Dual voltage transformer for connection to 110 or 220 VAC 60HZ systems.
- Terminal block facilitates field wiring connections.
- Instruction sheet and maintenance record card provided with unit in a protective plastic envelope.

❖ Electrical Ratings

- Power supply :
Input : 110 or 220 VAC, 60Hz 0.5 Amps Max.
Output : DC 12V
30 wattage for 1 -1/2" Hours at 40°C

❖ Ordering Number

Catalog No.	EXEL2-12	EXEL2-20
Lamp(Halogen)	12W	20W
Input Volt	110 or 220 VAC	
Output Volt	DC 12V	

For class III applications, fixtures must not be aimed more than 30° above horizontal (see diagram left)

⇒ If you need more information, contact us please.